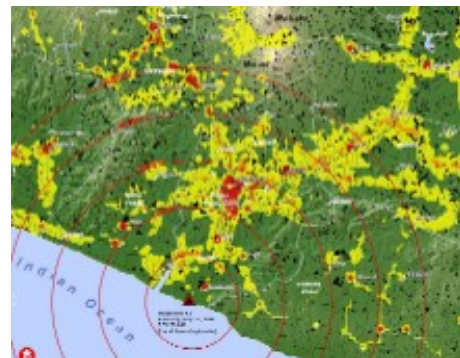




# Earthquake in Java, Indonesia



Earthquake in Indonesia (Java)  
 27.05.2006  
 Time, local: 05.54  
 " UTC: 22.54  
 " CH: 00:54  
 Magnitude: 6.3

## Humanitarian Aid Support

Switzerland's Humanitarian Aid (HA) was immediately active in the region affected by the earthquake. Two experts of the Swiss Humanitarian Aid Unit (SHA) arrived in Yogyakarta one day after the disaster to evaluate the situation with Indonesian partners and were able to take initial aid measures.

## Current Actions

Switzerland has undertaken the following measures, in close collaboration with the Indonesian authorities, UN agencies, local and international partners:

- Two SHA experts were already in the Indonesian capital of Jakarta at the time of the earthquake, and they were able to arrive in the disaster area on the evening of 28 May. In collaboration with the local authorities, the Indonesian Red Cross and other partners, they evaluated the most urgent requirements. They began by purchasing items such as tenting, waterproof clothing and food (mainly for children) on the local market and distributed them amongst the survivors. SDC Humanitarian Aid financed the purchases with an emergency contribution of CHF 250,000.
- In close collaboration with UNOCHA, a SHA expert evaluated possible environmental damages.
- Three more SHA experts arrived in the disaster area on 1 June. In close collaboration with the Swiss Red Cross, they are continuing to carry out the initiated first aid measures and are evaluating further requirements, for example, in the area of health.
- CHF 130,000 were donated to the Indonesian Red Cross to finance the purchase of vital materials and medicines.

## Background Information

On 27 May a 6.3 magnitude earthquake shook the Indonesian island of Java. The epicentre was approximately 25 km south-west of the main city of Yogyakarta, in the province of the same name. It was this province of central Java that was worst affected by the earthquake.

The latest reports say the earthquake has claimed 6,000 human lives. Some 15,000 people were injured and more than 200,000 lost their homes. According to estimates, at least 60,000 houses were destroyed or severely damaged in the region. 1/3 of the homeless have been without shelter from the heavy rains of the past days.



## The Operation in Figures

- 5 SHA experts have been sent to the area affected by the earthquake.
- SDC Humanitarian Aid has donated CHF 130,000 to the Indonesian Red Cross for emergency aid.
- SDC Humanitarian Aid is financing the purchase of urgently needed materials for the sum of CHF 250,000.

## For Further Information

[www.sdc.admin.ch](http://www.sdc.admin.ch) E-Mail: [hh@deza.admin.ch](mailto:hh@deza.admin.ch)  
 Section Asia/America: [nathalie.semoroz@deza.admin.ch](mailto:nathalie.semoroz@deza.admin.ch)  
 Media Information: [jean-philippe.jutzi@deza.admin.ch](mailto:jean-philippe.jutzi@deza.admin.ch)

SDC Humanitarian Aid  
 Phone +41 31 322 31 24

02.06.06  
 Photos: SDC

